

# TeethXpress With BioHorizons; A Case Report

Dr. Nabina Miya, Dr. Bikal Ghimire, Dr. Bidhan Shrestha

Kantipur Dental College, Hospital and Research Centre

## Introduction

- TeethXpress is a biomechanically-stable, immediate load and function protocol for fully or partially edentulous patient.
- For Immediate load, BioHorizons tapered implants with Laser-Lok technology offer superior primary stability.

## Case Presentation

- A 52 year old male patient presented with completely edentulous mandible.
- A former removable complete denture patient dissatisfied with the denture

## Investigation

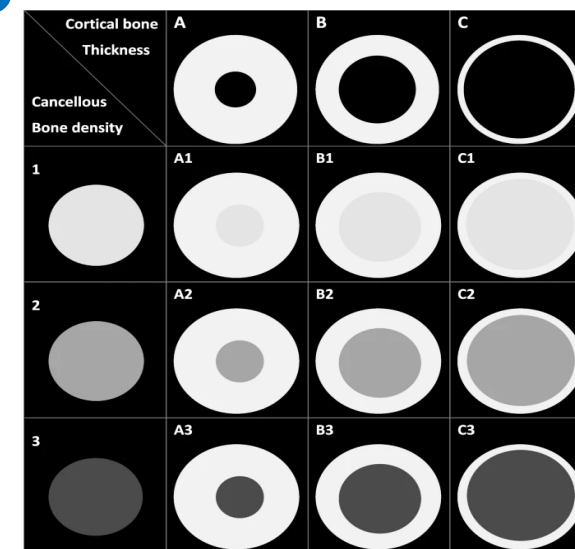


Figure 1: Preoperative image and description

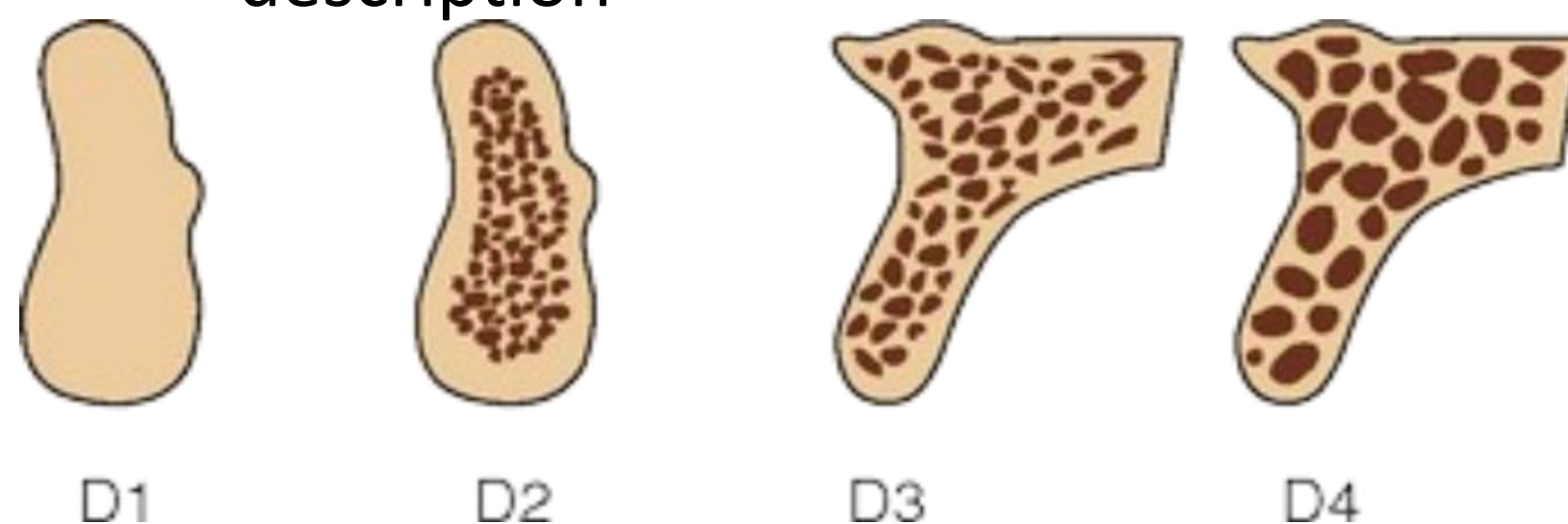
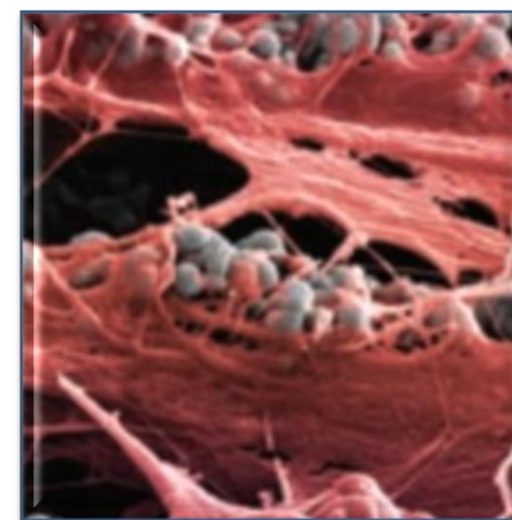
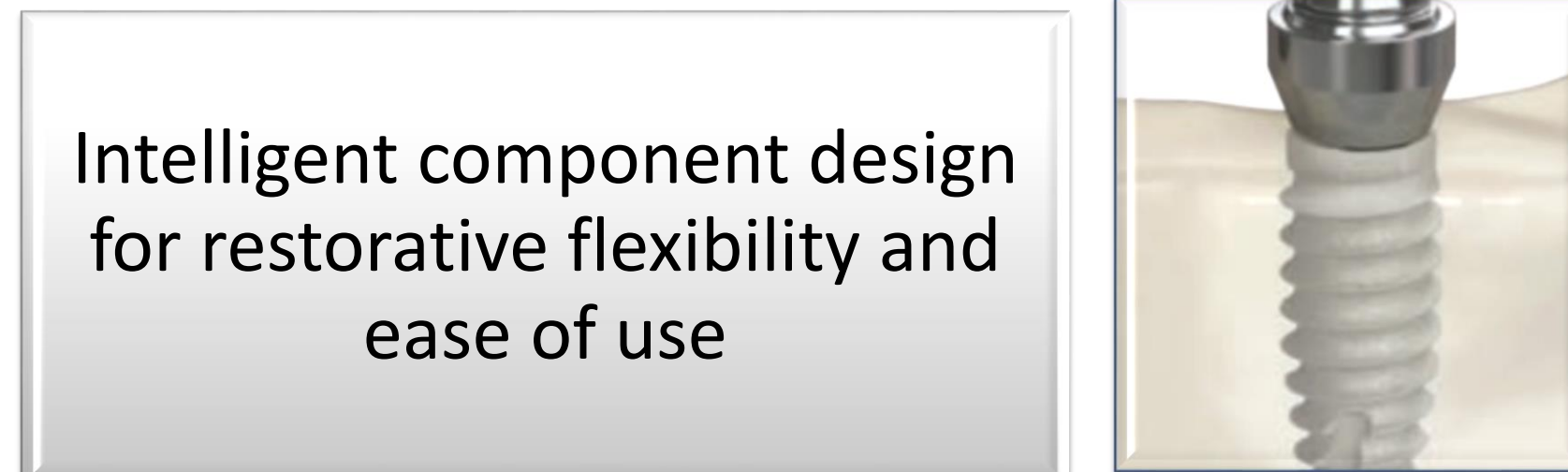


Figure 2: Classification of bone quality

## Why TeethXpress?

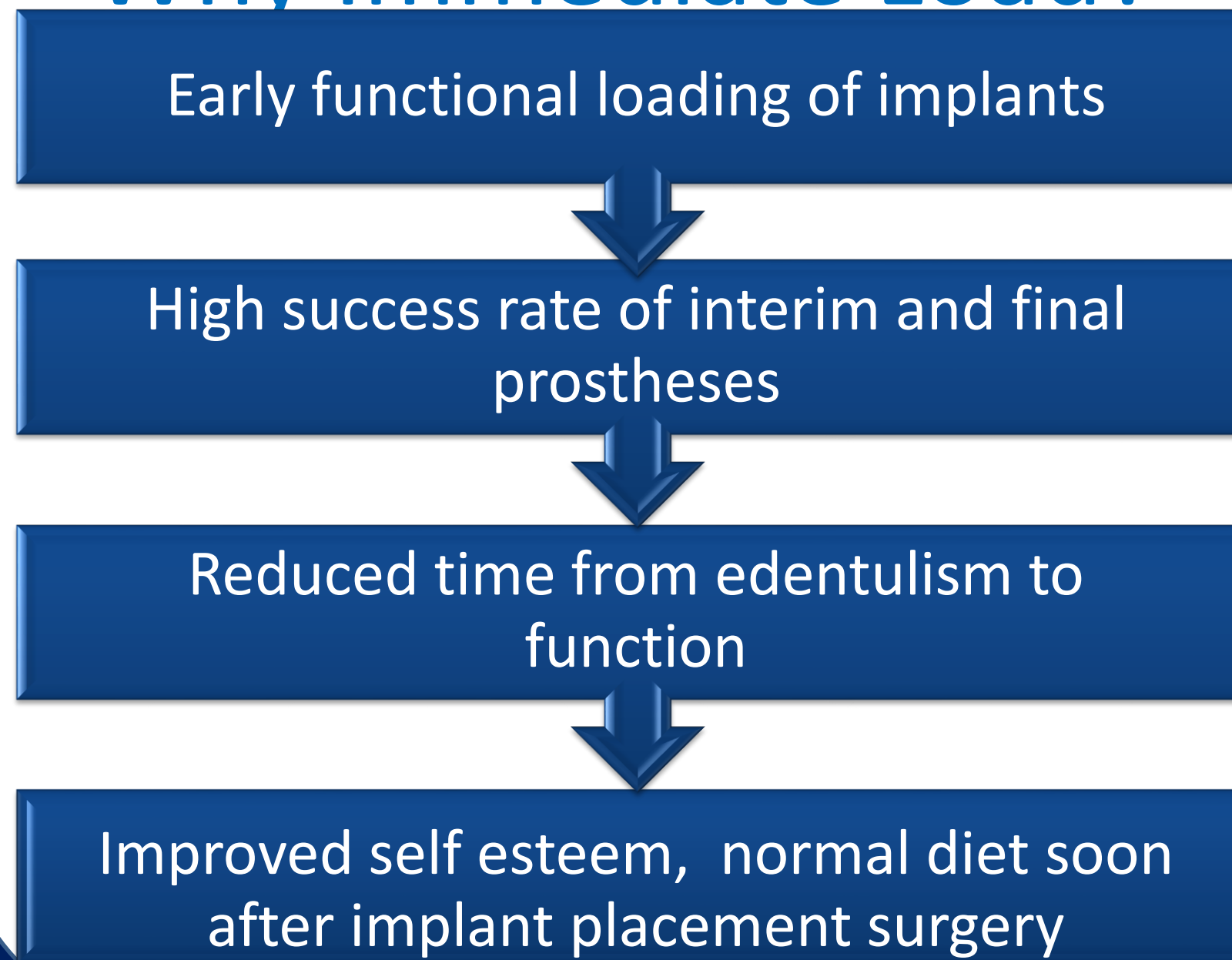


Laser Lok Zone Creates a connective tissue attachment, retaining crestal bone



Buttress threads engineered to provide primary stability essential for immediate load

## Why Immediate Load?



## Surgical Procedure

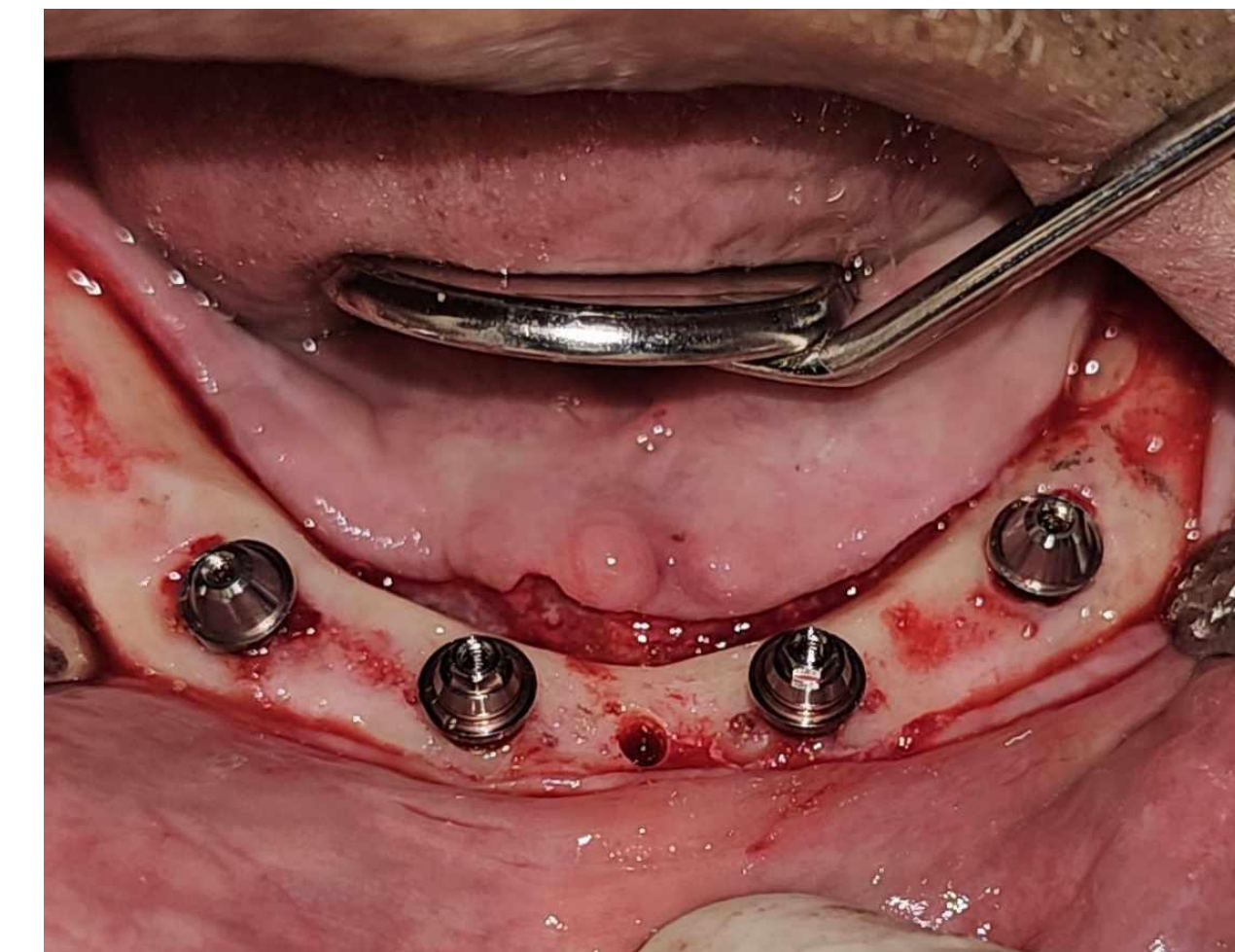


Figure 3: Anterior axial and posterior tilted implant placement done



Figure 4: Implant Loading



Figure 5: Former denture used as interim prosthesis

## CONCLUSIONS

- High implant and prostheses survival rate
- Low marginal bone resorption rate
- Impression and registrations for making the prostheses can be made at implant installation
- Long term success depends on maintenance of peri-implant health.



## DISCLOSURE OF INTEREST

The article is not funded by any institution or association.

Verbal consent of patient is taken to publish images and articles.

The is no any issue of conflict of interest among the authors.