

AIM

This study aims to demonstrate that the socket-shield technique effectively preserves labial contour and prevents exposure of the shield over an extended period in the esthetic zone.

Background

The socket-shield technique involves retaining a buccal fragment of the tooth during immediate implant placement. This approach is critical for maintaining the buccolingual dimension of the alveolar ridge and minimizing buccal bone resorption, which is particularly important in the esthetic zone.

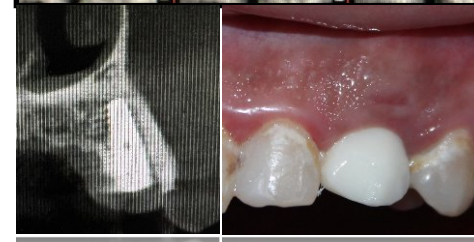
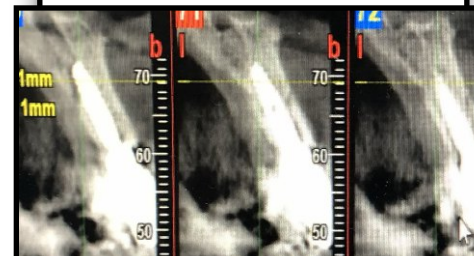
MATERIAL&METHODS

horizontal splitting and remove palatal part of the root and leave 2mm thickness of labial fragment. Crestal part of labial part decreased 3mm under gingival margin. BioHorizons Tapered internal implant (3.4x10.5mm) tooth 21 and (4.2x10.5) tooth 23 , no bone graft was used just collagen sponge .Screw retained zirconia crown used.



RESULTS

The findings indicate no exposure of the shield, with the labial contour remaining stable or even improving in the long term. Preservation of the buccolingual dimension was consistently observed, and even CBCT show bone formation between implant and shield supporting the effectiveness of the socket-shield technique in maintaining aesthetic



CONCLUSION

The socket-shield technique is an effective method for preserving buccal bone and enhancing esthetic results in immediate implant placement. This technique contributes to stable outcomes in the labial contour over time.



DISCLOSURE OF INTEREST

"None"